

Adventure 1 I lost and then I got lost





EPISODE

1

Everything was fine

Esteban and Samanta find a beautiful park in the city. They play 'I spy...' and use **lines** to find out what they are looking at.

EPISODE

2

Everything went wrong

Esteban and Samanta get lost! But Esteban uses something to find the **path** back home.

EPISODE

3

Everything went wrong... again

Esteban and Samanta go into a subway station. They are surprised by the **amount** of people around them.

EPISODE

4

Everything was amazing

After leaving Toy Empire, they see something interesting on Main Avenue after every few **meters**.



Superpowers from previous grades

Before you start your adventure...

Join Esteban on this adventure around the city. Use your knowledge and learn the meaning of the **useful words**.



Superpower: Recognizing straight lines

Straight lines are easy to recognize because they always go in the same direction. You can draw these lines with a ruler.

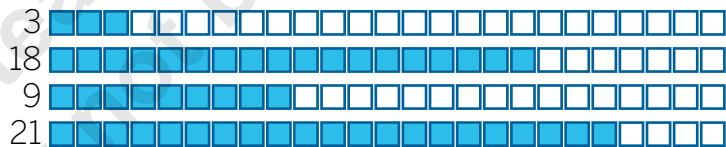


Superpower: Putting natural numbers in ascending order

To order numbers, first we compare them, then we write them from the lowest to the highest.



>>ACTIVATE your superpowers



$$3 - 9 - 18 - 21$$



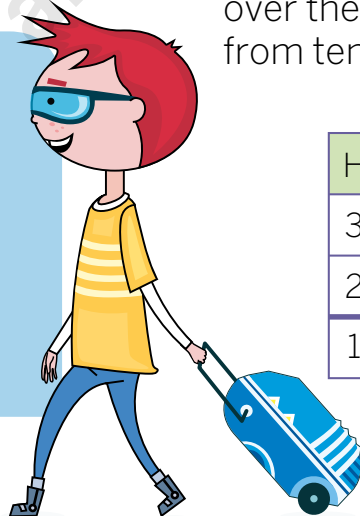
Superpower: Subtracting natural numbers

To subtract one number from another, put one over the other and take ones from ones, tens from tens, and hundreds from hundreds.



Useful words

- Consecutive
- Crowded



H	T	O
3	5	5
2	5	0
1	0	5

$$\begin{array}{r} \text{Decompose} \\ 300 + 50 + 5 \\ - 200 + 50 + 0 \\ \hline 100 + 0 + 5 \end{array}$$

Subtract

ESTEBAN WANTS TO KNOW HOW FAR HE IS FROM THE HOTEL. SOLVE EACH PUZZLE AND HELP HIM TO FIND THE NUMBER THAT HE NEEDS TO KNOW.



I can see a blue horizontal line that crosses with a red vertical line. Both of these cross with an orange diagonal line.

Puzzle 1

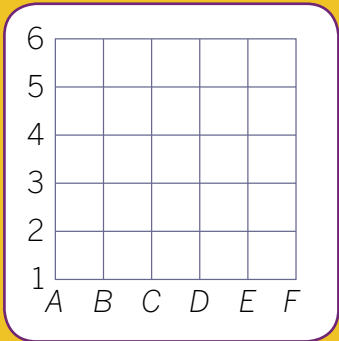
The hundred in the number he needs, is the same as the number in the image Esteban describes.

Puzzle 2

You can find the ten of the number at the point where Esteban arrives.

Starting point
A1

Path
3↑, 2→, 1↑, 4↓, 2←



Puzzle 3

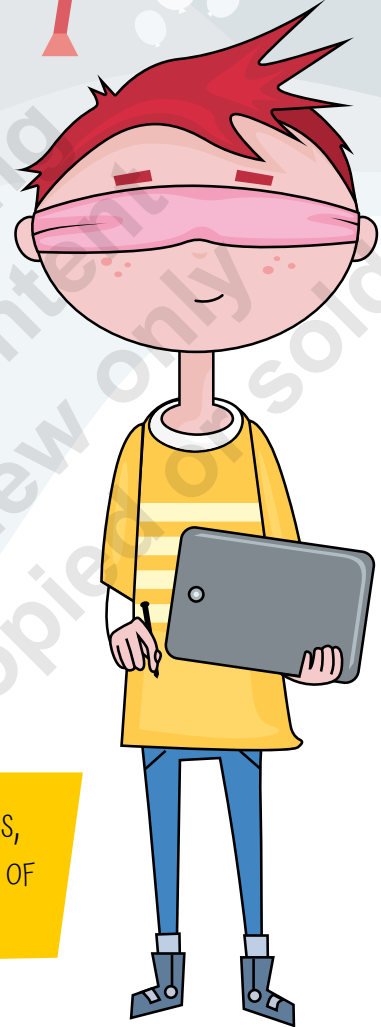
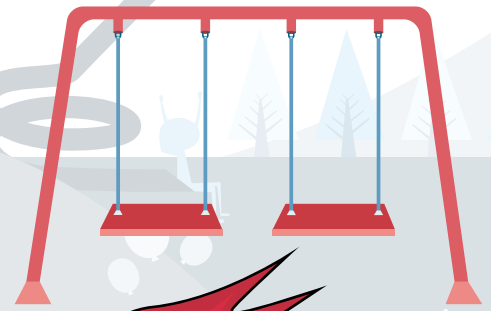
The card that Samanta took has the thousand of the number.

Samanta took the card with the biggest whole thousand.

- 2300
- 7000
- 3000
- 2001
- 0600

Everything was fine

On their walk, Esteban and Samanta found a cool park with modern games and old swings. While they are waiting for their turn on the swings, Esteban covers his eyes to play 'I spy...'

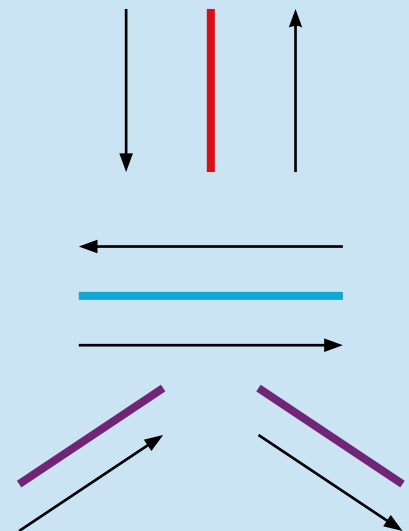


SAMANTA WANTS TO DESCRIBE THE SWINGS, SO SHE NEEDS TO KNOW THE THREE TYPES OF LINES ACCORDING TO THEIR DIRECTION.



Types of lines according to their direction

- **Vertical line.** This is a straight line with a direction going from up to down, or from down to up.
- **Horizontal line.** This is a straight line with a direction going from left to right, or from right to left.
- **Diagonal line.** This line is not vertical or horizontal. It is slanted.



Samanta draws the swings on her phone and colors the lines with her fingers.

>>Vertical, horizontal, and diagonal lines



SUPERPOWER 1

She colors the lines from left to right, or from right to left, blue.

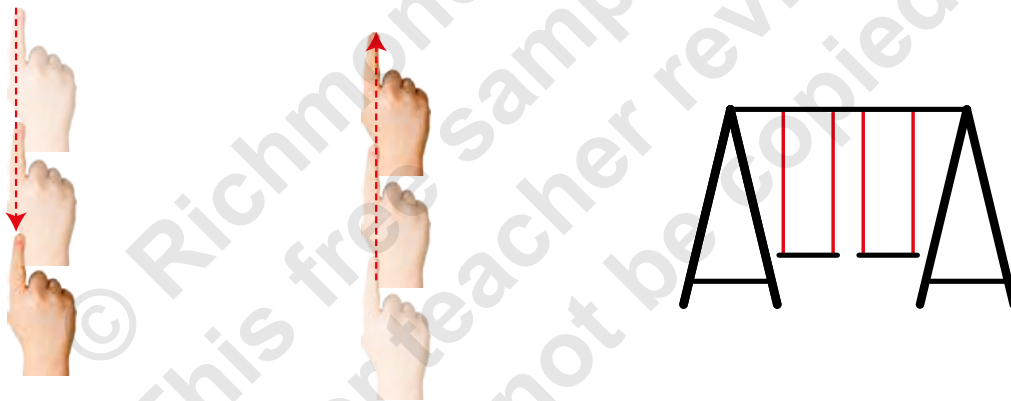


These are horizontal lines.



SUPERPOWER 2

She colors the lines from up to down, or from down to up, red.



These are vertical lines.



SUPERPOWER 3

Finally, she colors the slanted lines, orange.



These are diagonal lines.

USE YOUR SUPERPOWERS

1. Samanta took a lot of photos at the park.
Match the ones that are the same with a straight line.
Then, write the type of line you drew.



2. Esteban and Samanta walked around the lake starting from the red dot, looking at the trees and animals. Look at the path. Which type of line is each color? Write.



-
-
-
-
-
-
-
-

AFTER THEIR WALK AROUND THE LAKE, IT IS ESTEBAN'S TURN TO DESCRIBE SOMETHING.



Now, it is my turn to draw. Don't make it too difficult, please.

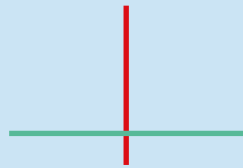
Don't worry, I am going to make it very easy.



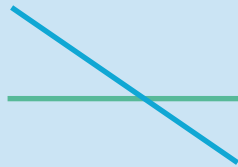
ESTEBAN CHOOSES TO DESCRIBE THE POSTER FOR THE ICE CREAM SHOP. TO DO IT RIGHT, HE NEEDS TO KNOW THE RELATIONSHIP BETWEEN THE DIFFERENT LINES.

Lines that cross and do not cross

- Two straight lines **cross** when they have different directions.



Vertical–horizontal



Horizontal–diagonal



Vertical–diagonal

- Two straight lines **do not cross** when they both have the same direction.



Two vertical lines



Two horizontal lines



Two diagonal lines
with the same direction

GET SUPERPOWERS



SUPERPOWER 4

Esteban looks at the poster. He imagines that the lines light up. He looks very carefully at the ice creams to find two vertical, two horizontal, or two diagonal lines.



>>Lines that
do not cross



The tub has two horizontal lines.

I can see two slanted lines on the cone. They are diagonal lines with the same direction.

In the popsicle, I can see two vertical lines.

EACH ICE CREAM HAS TWO LINES THAT DO NOT CROSS.



SUPERPOWER 5

Now, Esteban tries to find some lines that cross.

They made the X with two diagonal lines with different directions.



One side of the poster is vertical and the other is horizontal.

YOU CAN SEE SOME LINES THAT CROSS ON THE POSTER.



USE YOUR SUPERPOWERS

3. Look at the picture. Color lines that cross in blue. Color lines that do not cross in green.

